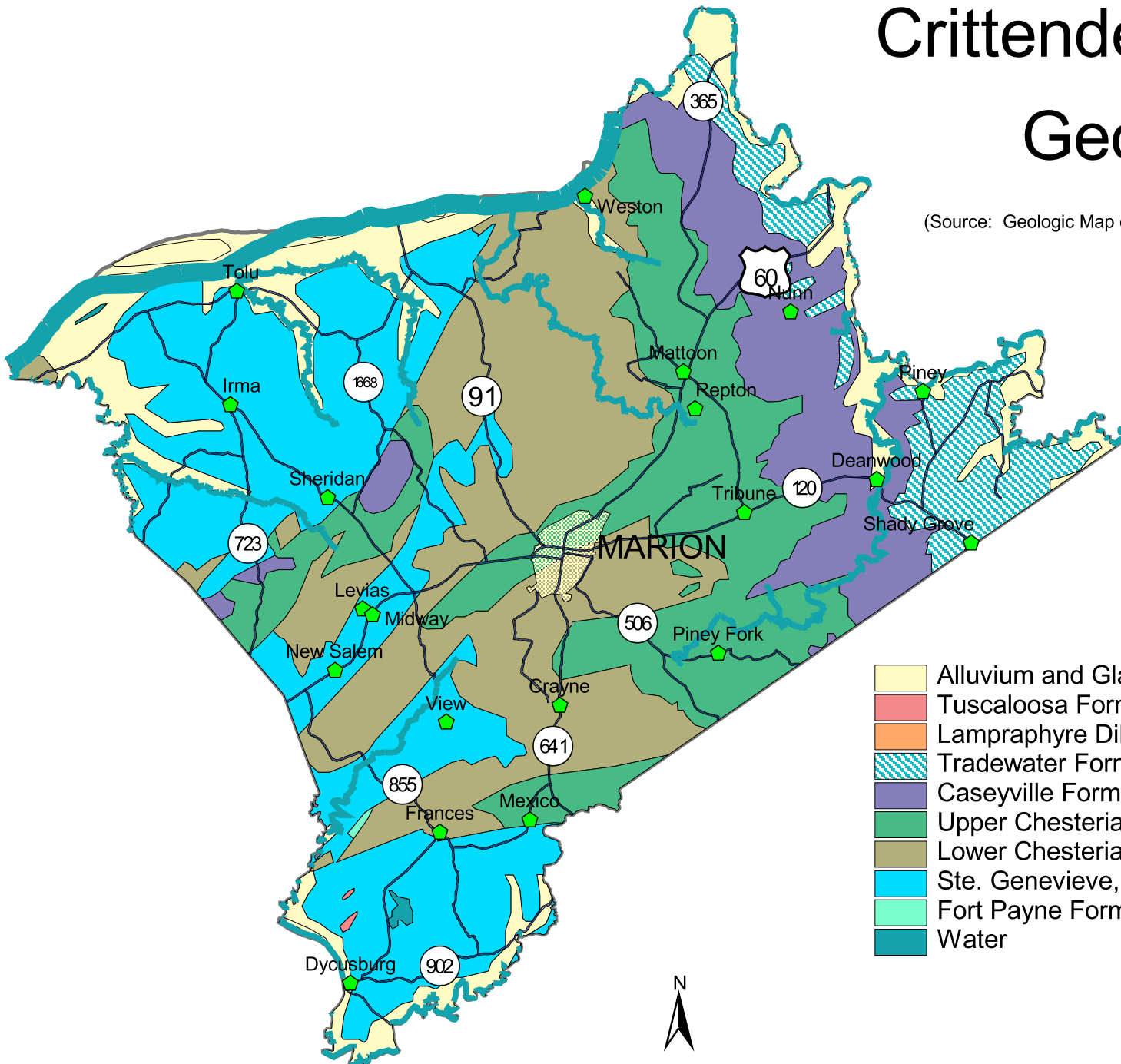


# Crittenden County Geology

(Source: Geologic Map of Kentucky, Scale, 1:500,000)



- Alluvium and Glacial Outwash Sediments
- Tuscaloosa Formation
- Lampraphyre Dikes and Sills
- Tradewater Formation
- Caseyville Formation
- Upper Chesterian Formations
- Lower Chesterian Formations
- Ste. Genevieve, St. Louis Limestone
- Fort Payne Formation
- Water

